



**Compensator
WSK-600**

**Test certificate P-TUM-411
P-3464/5595-MPA BS**

**Functional endurance of
120 min at 600 °C**

General / ordering example

Ordering example:
WSK-600 / B x H x L = 155 mm

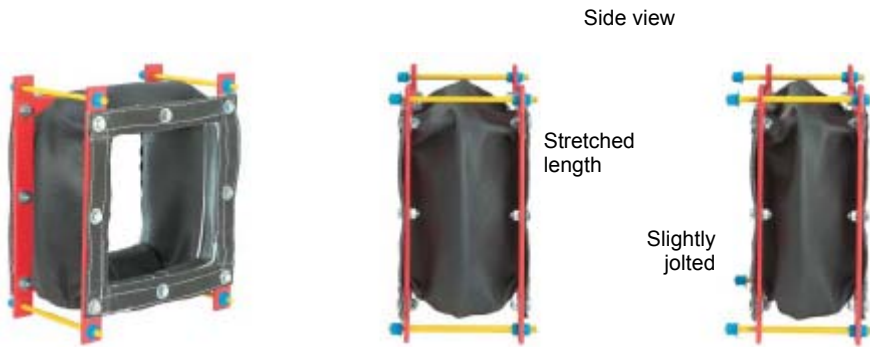
Dimensions B (width) x H (height) in mm (always corresponds to the clear shaft or smoke control damper dimensions)

Available clear dimensions in [mm]																
B	201	252	318	357	400	449	503	565	634	711	797	894	1003	1125	1250	1251-1500
H	201	252	318	357	400	449	503	565	634	711	797	850	900	950	1000	797

Intermediate sizes on request

Please note:

The threaded bolts that are necessary for the guiding are on the outside due to the incorporated supporting ring, i.e. the outside dimensions of the WSK-600 are B + 60 mm and H + 120 mm. If the local conditions should not allow the dimension H + 120 mm, then the dimensions B and H can be exchanged. Please state this when ordering.



WSK-600 compensator consisting of:

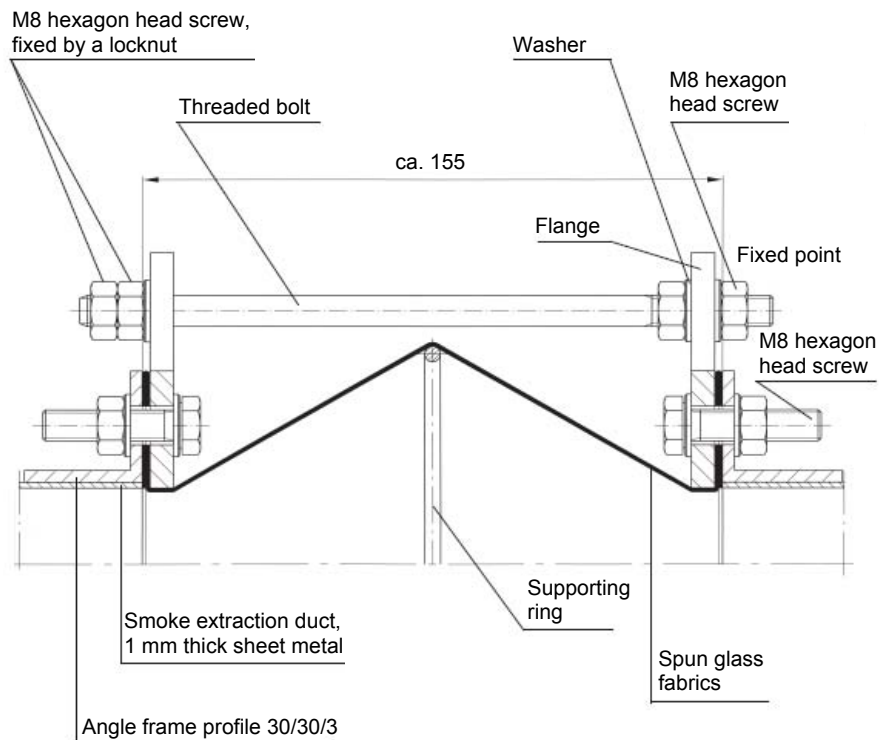
Single-layer spun glass fabrics ca. 1 mm thick with a special elastomer coating and a supporting ring lying within. Stiffeners are arranged in the area of the fastening (two flanges per compensator).

The WSK-600 compensator is intended for the installation into sheet metal smoke extraction ducts that have a test certificate and it is only allowed to be used within one fire zone.

To balance out duct elongations and to prevent horizontal forces resulting from this, for horizontal ducts having a length of ≥ 5 m compensators shall be arranged between walls, which shall have a fire resistance class according to the building supervision guidelines.

The distance between two compensators shall not exceed 10 m.

Transverse section of the WSK-600 having a connection with sheet metal smoke extraction ducts on both sides



**Compensator
WSK-600**

Test certificate P-TUM-411

Functional endurance of
120 min at 600 °C

Dimensions

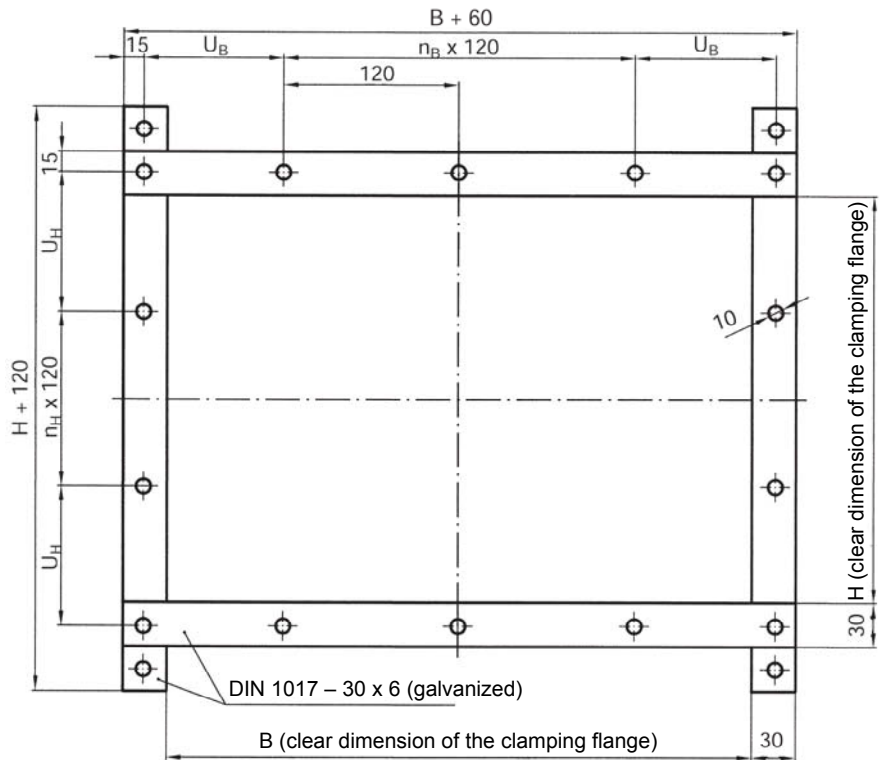
Please note:

The hole pattern of the connection flange of the WSK-600 is fixed according to the following drawing.

If the WSK-600 is directly connected to our RKU-90 smoke control dampers, then the hole pattern of the WSK-600 can be adjusted to the duct connecting profile of the RKU-90 (please state separately when ordering).

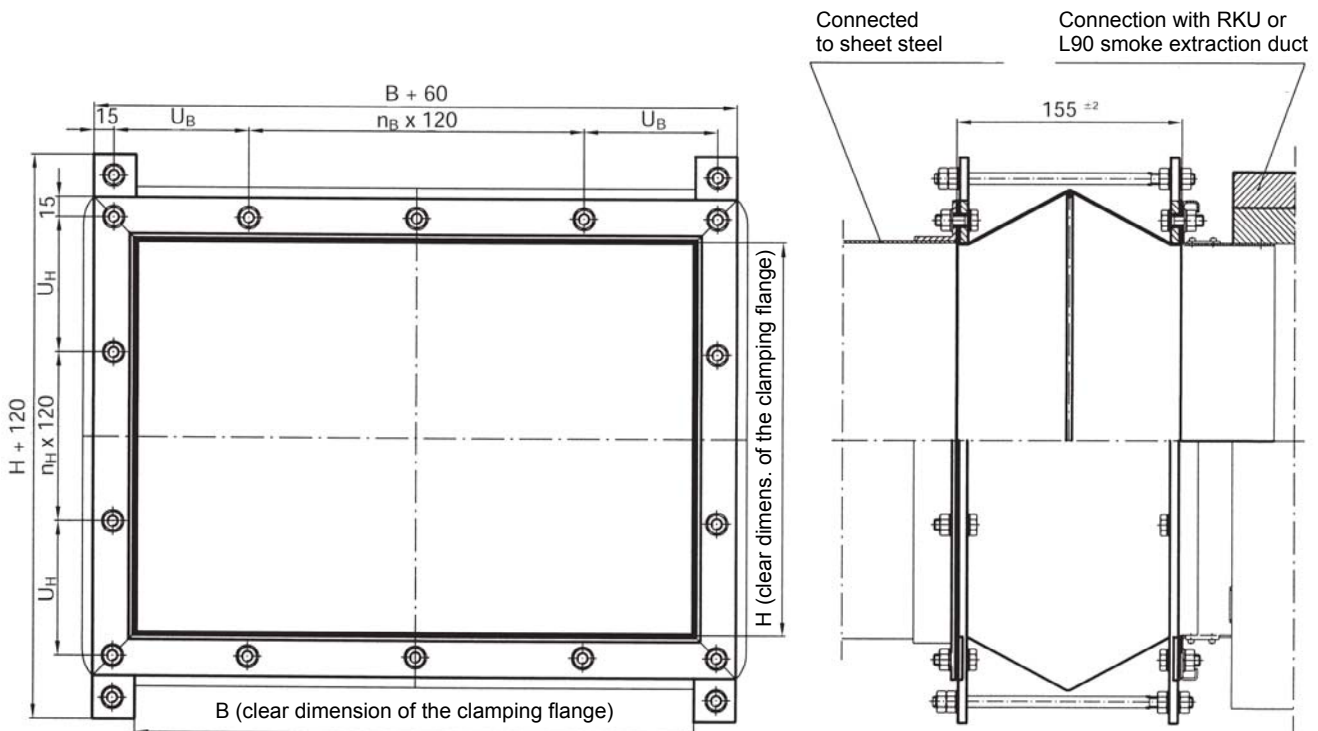
The same applies to the installation of the WSK-600 between smoke extraction ducts of sheet steel.

Flange dimensions / hole pattern



Please note: U_B and U_H are > 60 and ≤ 120

General view of the complete WSK-600 and the connection with tested smoke extraction ducts of sheet steel, L90 smoke extraction duct or RKU smoke control damper



The required installation dimension between the ducts is 155 ± 2 mm.

Tender Text

Item	Description	Unit Piece	Unit price EUR	Total EUR
	<p>Compensator (angular) 600 °C P-TUM-411 and P3464/5595-MPA BS</p> <p>Compensator tested in accordance with DIN 18232-6 (10/97).</p> <p>The compensator has been tested at room temperature with 1500 Pa underpressure and at 600 °C with 500 Pa underpressure for a period of 120 min.</p> <p>To balance out the duct elongations of the tested smoke extraction duct of sheet steel and to prevent horizontal forces resulting from this, for horizontal ducts having a length of ≥ 5 m compensators shall be arranged.</p> <p>The distance between two compensators shall not exceed 10 m.</p> <p>Maximum dimensions:</p> <p>B = 1250 mm, H = 1000 mm and B > 1251 mm – 1500 mm, H = 797 mm</p> <p>Manufacturer: Strulik GmbH</p> <p>Type: WSK-600</p> <p>Dimensions: B: _____ mm H: _____ mm L: ~ 155 _____ mm</p> <p>Deliver</p> <p>Install</p>			



Compensator WSK-600

Test certificate P-TUM-411
P-3464/5595-MPA BS

Functional endurance of
120 min at 600 °C

General / ordering example



WSK-R-600 compensator consisting of:

Single-layer spun glass fabrics ca. 1 mm thick with a special elastomer coating and a supporting ring lying within. Stiffeners are arranged in the area of the fastening (two flanges per compensator).

The WSK-R-600 compensator is intended for the installation into round sheet metal smoke extraction ducts that have a test certificate and it is only allowed to be used within one fire zone.

To balance out duct elongations and to prevent horizontal forces resulting from this, for horizontal ducts having a length of ≥ 5 m compensators shall be arranged between walls, which shall have a fire resistance class according to the building supervision guidelines.

The distance between two compensators shall not exceed 10 m.

Ordering example:

WSK-R-600 / NW x L = 155 mm

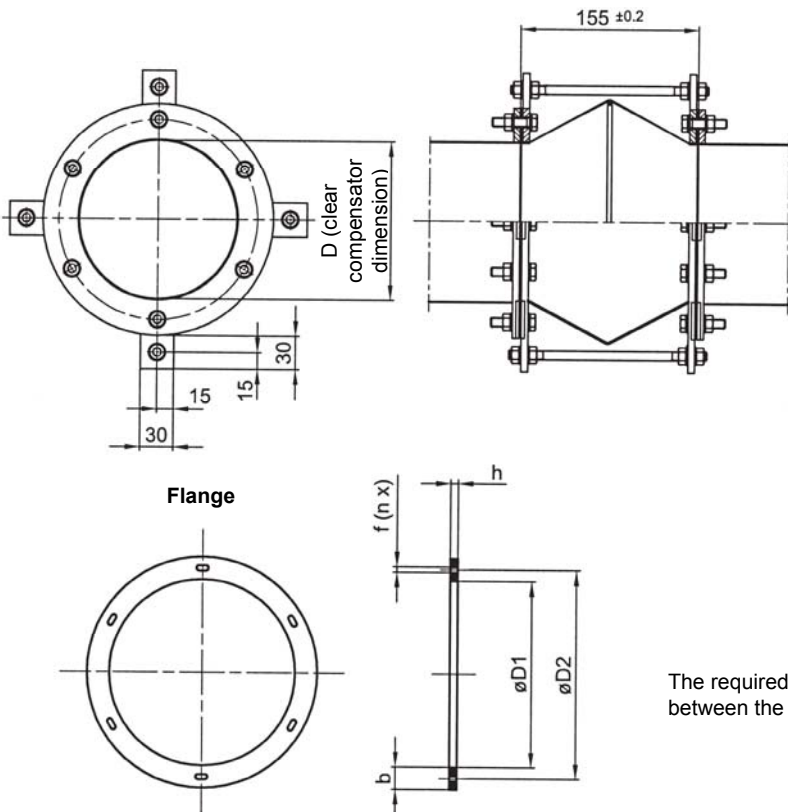
Nominal width in mm
(always corresponds to the clear duct diameter)

Available clear dimensions in [mm]											
100	112	125	140	150	160	180	200	224	250	280	300
315	355	400	450	500	560	600	630	710	800	900	1000

Please note:

The threaded bolts that are necessary for the guiding are on the outside due to the incorporated supporting ring. The exact dimension are given in the following drawing and table.

Compensator/round



Ø D ₁		Ø D ₂	f	DIN 601							
nom	mm	Tol.	mm	mm	n	dim x L	b x h				
100	102	+1/-0	129	7 x 16	4	M6 x 16	25 x 3				
112	114		141								
125	127		155								
140	142		176								
150	152	184	+1,5/-0		6	M6 x 20	30 x 4				
160	162	194									
180	182	213									
200	203	235									
224	227	259									
250	253	286									
280	283	322						9,5 x 20	8	M8 x 20	35 x 5
300	303	341									
315	318	356									
355	358	395									
400	404	438									
450	454	487									
500	504	541									
560	564	605	+2/-0	16	M10 x 20	40 x 5					
600	604	644									
630	634	674									
650	654	694									
710	714	751									
750	754	791									
800	804	837									
900	904	934									
1000	1005	1043					11,5 x 24	24			

The required installation dimension
between the ducts is 155 ± 2 mm.

Tender Text

Item	Description	Unit Piece	Unit price EUR	Total EUR
	<p>Compensator (round) 600 °C P3469/5645-MPA BS</p> <p>Compensator tested in accordance with DIN 18232-6 (10/97).</p> <p>The compensator has been tested at room temperature with 1500 Pa underpressure and at 600 °C with 500 Pa underpressure for a period of 120 min.</p> <p>To balance out the duct elongations of the tested smoke extraction ducts of sheet steel and to prevent horizontal forces resulting from this, for horizontal ducts having a length of ≥ 5 m compensators shall be arranged.</p> <p>The distance between two compensators shall not exceed 10 m.</p> <p>Dimensions: In increments from NW (nominal width) 100 to 1000 mm.</p> <p>Manufacturer: Strulik GmbH</p> <p>Type: WSK-R-600</p> <p>Dimensions: NW: _____ mm L: ~ 155 _____ mm</p> <p>Deliver</p> <p>Install</p>			